


REQUEST FOR COUNCIL ACTION

Date: 12/03/12
Item No.: 13.d

Department Approval



City Manager Approval



Item Description: Discuss Pedestrian Activated Crosswalk Signal at Dionne St. and Lexington Ave.

1 **BACKGROUND**

2 Councilmember Johnson requested a discussion of a pedestrian signal for Lexington Ave. at
3 Dionne St. be added to the agenda. Staff has received numerous concerns over the past several
4 years about the safety of pedestrians crossing Lexington Ave. at this location. City staff does
5 rotate centerline warning signs to this location each summer season alerting drivers to the
6 requirement to stop for pedestrians in the crosswalk.

7
8 Ramsey County has authority over Lexington Avenue and we recommend additional discussion
9 with their staff to determine the best solutions to the safety concerns.

10
11 **POLICY OBJECTIVE**

12 The City is committed to providing pedestrian facilities that provide safe crossing of roadways.

13
14 **FINANCIAL IMPACTS**

15 Pedestrian activated signals can cost up to \$20,000 or more depending on power availability and
16 type of signal installed. Lexington Avenue is under Ramsey County jurisdiction. Pedestrian
17 signals have typically been a local cost when approved for installation on their roadways.

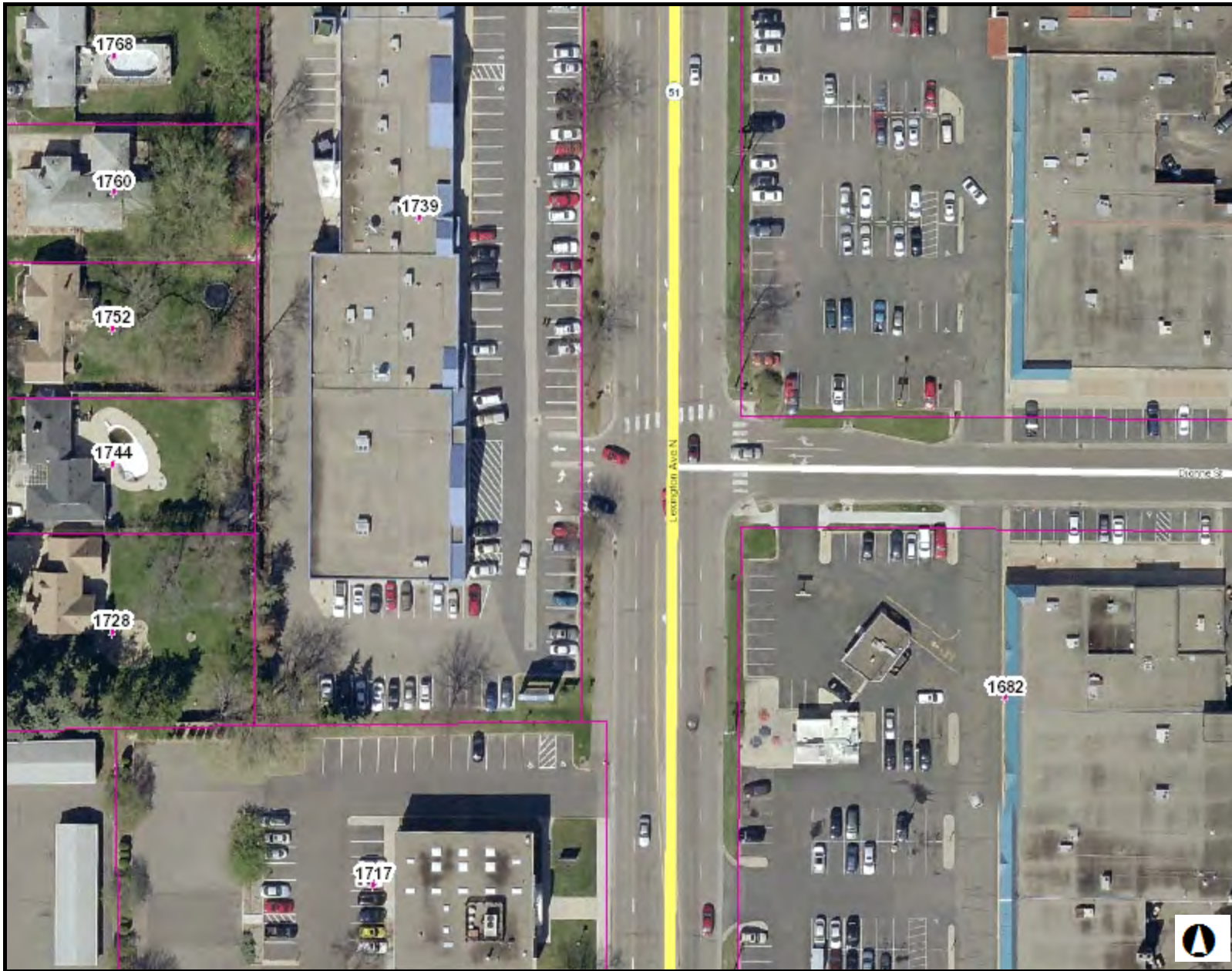
18
19 **STAFF RECOMMENDATION**

20 Staff is seeking Council direction on this item. We recommend additional discussion with Ramsey
21 County on solutions to the safety issues of this intersection. Ramsey County will need to approve
22 any modifications to the intersection including signal installations.

23
24 **REQUESTED COUNCIL ACTION**

25 Provide direction to staff regarding additional informational needs or action.

Prepared by: Duane Schwartz, Public Works Director
Attachments: A: Aerial map



Legend

- County Offices
 - City Halls
 - Schools
 - Hospitals
 - Fire Stations
 - Police Stations
 - Recreational Centers
 - Parcel Points
 - Parcels
- GISTRASTER.GISPUB.IMAGE
- High : 255
- Low : 0

162.9 0 81.47 162.9 Feet

NAD_1983_HARN_Adj_MN_Ramsey_Feet
 © Ramsey County Enterprise GIS Division

This map is a user generated static output from an Internet mapping site and is for reference only. Data layers that appear on this map may or may not be accurate, current, or otherwise reliable.

THIS MAP IS NOT TO BE USED FOR NAVIGATION

Notes

Enter Map Description