

NOTES:

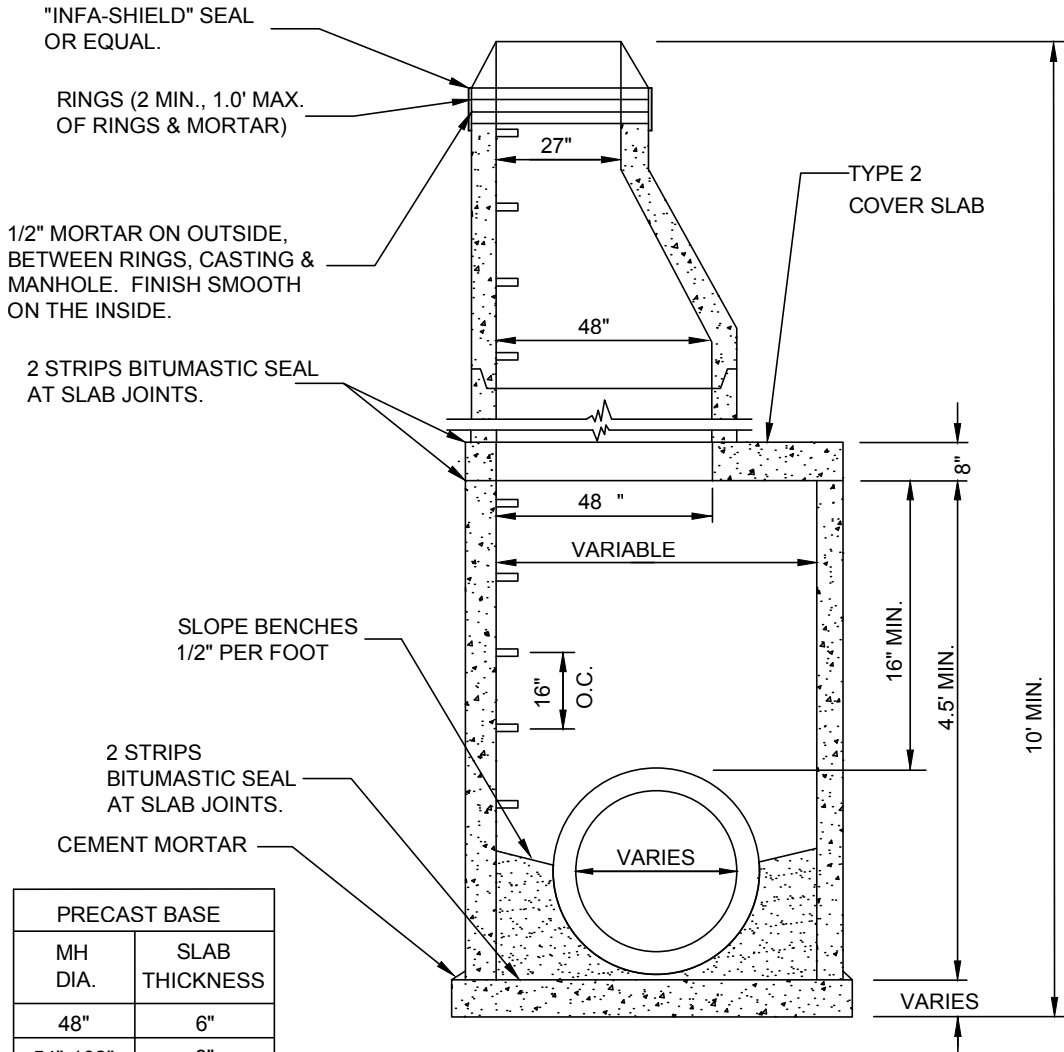
1. NO WOOD SHALL BE USED FOR ADJUSTING CASTING.
2. CAST IRON FRAME AND COVER AS PER SPECIFICATIONS.
3. MANHOLE STEPS SHALL BE ALUMINUM, OR STEEL REINFORCED PLASTIC PER ASTM C478.
4. PRECAST REINFORCED CONCRETE MANHOLE SECTIONS PER ASTM C478 FURNISHED WITH O-RING GASKETS AND LUBRICANT EXCEPT AS OTHERWISE SPECIFIED. LIFT HOLES NOT PERMITTED IN MANHOLE SECTIONS.
5. PIPE CONNECTIONS TO MANHOLE SHALL BE MADE WATER TIGHT BY CAST IN PLACE RUBBER BOOT AND CEMENT MORTAR. INSIDE SURFACE SHALL BE FINISHED SMOOTH.

DESIGN:	DATE:			
DRAWN:				
REVISIONS				

ROSEVILLE ENGINEERING DEPARTMENT

SANITARY MANHOLE

PLATE NUMBER
S-1



PRECAST BASE	
MH DIA.	SLAB THICKNESS
48"	6"
54"-102"	8"
108"	10"
120"	12"

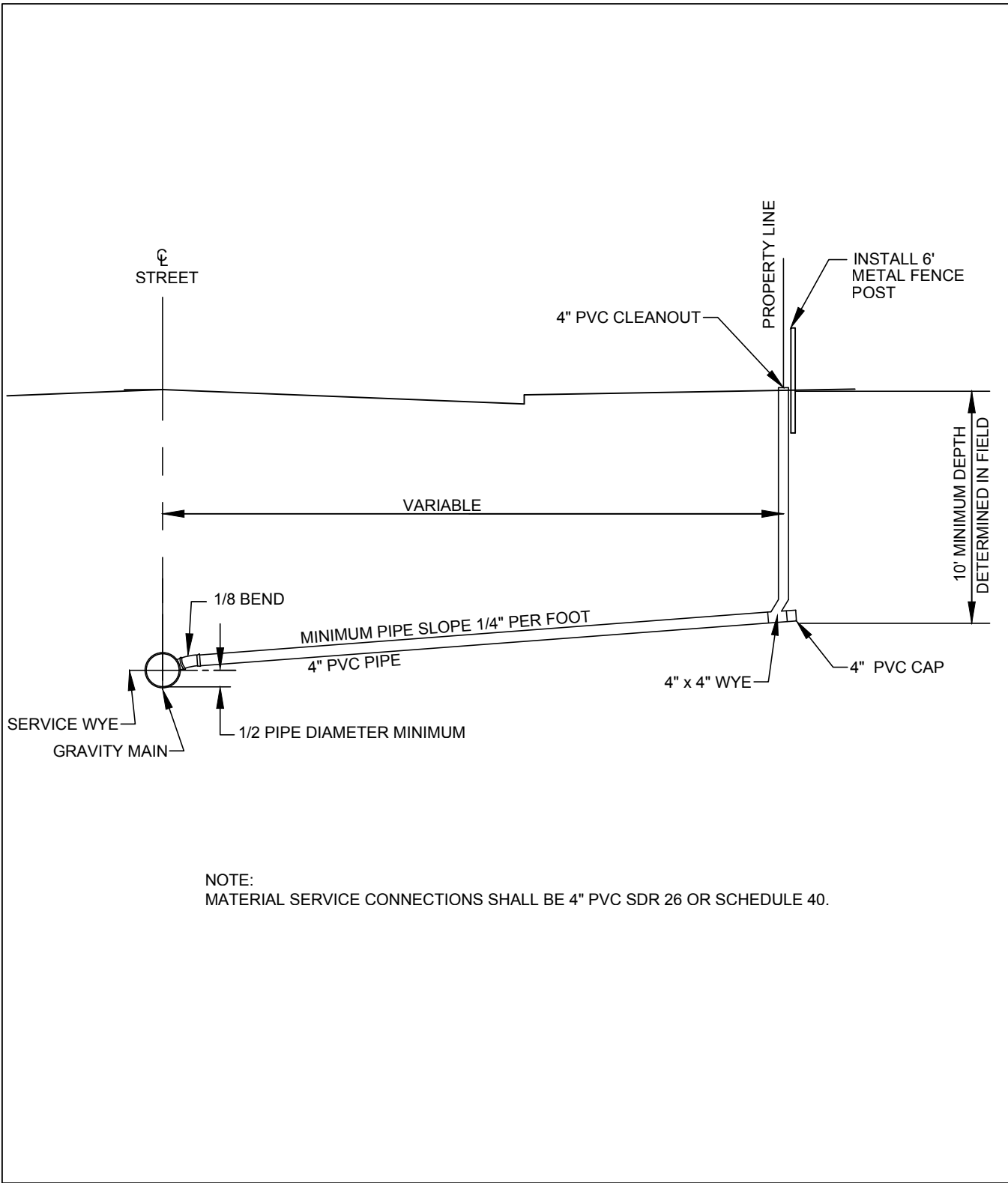
NOTES:

- NO WOOD SHALL BE USED FOR ADJUSTING CASTING, CEMENT MORTAR ONLY.
- CAST IRON MANHOLE FRAME & COVER AS PER SPECIFICATIONS.
- MANHOLE STEPS SHALL BE CAST IRON, ALUMINUM OR STEEL REINFORCED PLASTIC PER ASTM C478. STEP LOCATION SHALL BE AS NOTED IN THE SPECIFICATIONS.
- PRECAST REINFORCED CONCRETE MANHOLE SECTIONS PER ASTM C478, FURNISHED WITH O-RING GASKETS AND LUBRICANT EXCEPT AS OTHERWISE SPECIFIED. INSTALL 12" OR 16" BARREL SECTION UNDER THE CONE WHENEVER POSSIBLE.
- PIPE CONNECTIONS TO MANHOLE SHALL BE MADE WATER TIGHT BY CAST INPLACE.

DESIGN:	DATE:
DRAWN:	
REVISIONS	

ROSEVILLE ENGINEERING DEPARTMENT
SANITARY SEWER MANHOLE
 (27" OR MORE)

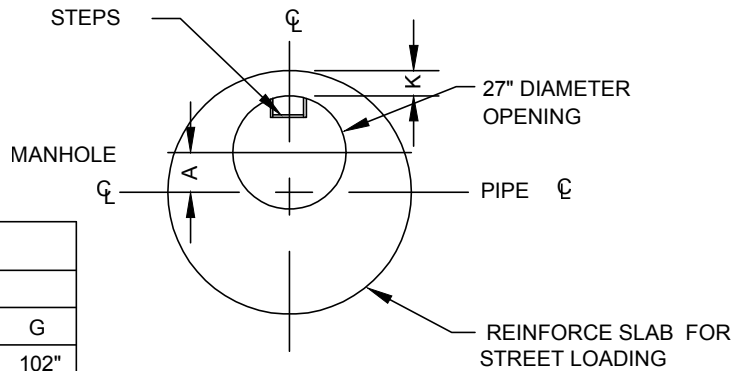
PLATE NUMBER
 S-2



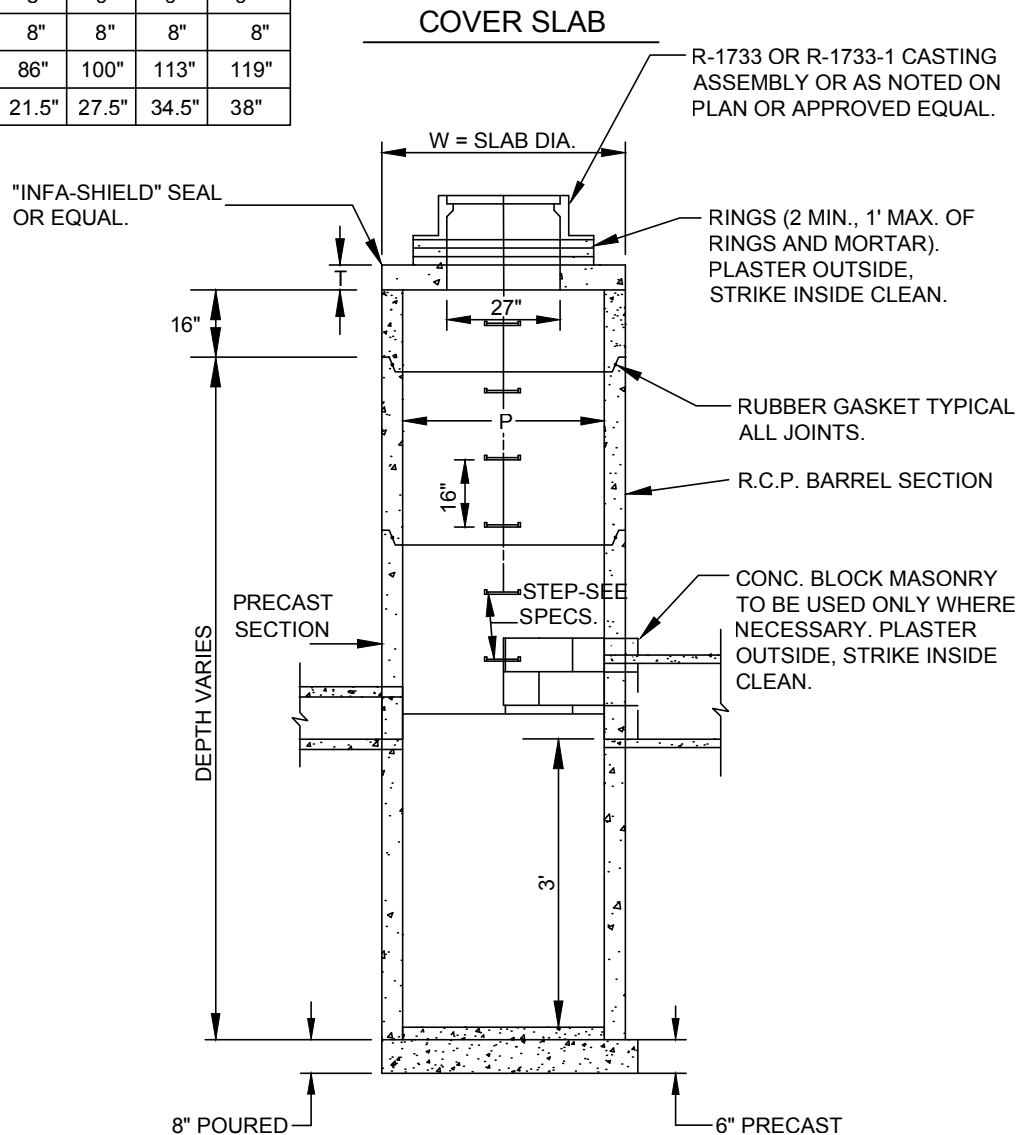
NOTE:
 MATERIAL SERVICE CONNECTIONS SHALL BE 4" PVC SDR 26 OR SCHEDULE 40.

DESIGN:	DATE:	 ROSEVILLE ENGINEERING DEPARTMENT	PLATE NUMBER
DRAWN: DRT			S-3
REVISIONS: 10/15			

NOTE:
 DIMENSION "A" IN CHART IS
 BASED ON A 27" DIAMETER
 OPENING. INCREASE "A" BY 1.5"
 FOR 24" OPENING.



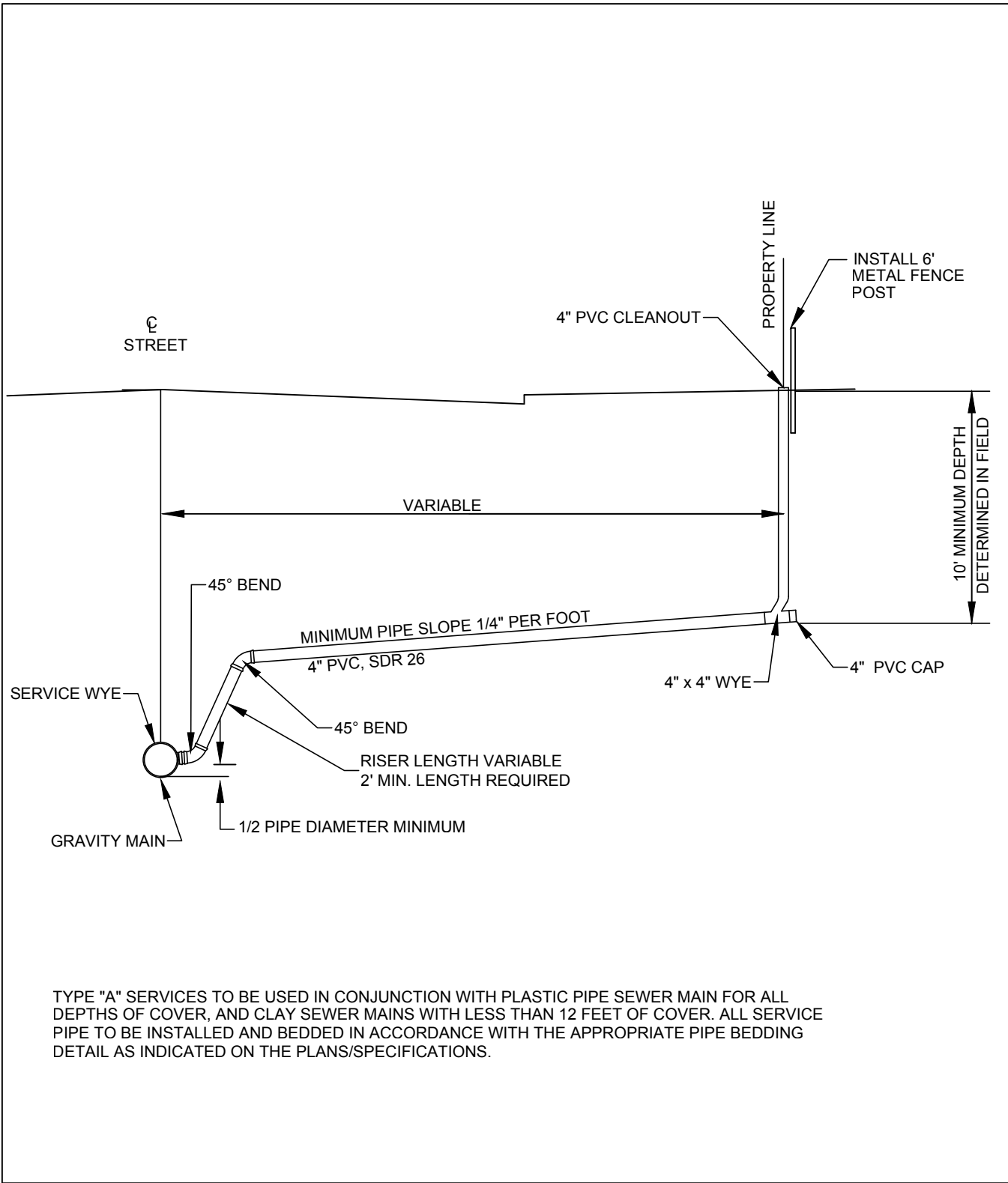
		MANHOLE TYPE					
		B	C	D	E	F	G
DIMENSIONS IN INCHES	P	48"	60"	72"	84"	96"	102"
	K	6"	7"	8"	9"	9"	9"
	T	6"	8"	8"	8"	8"	8"
	W	58"	72"	86"	100"	113"	119"
	A	9.5"	15.5"	21.5"	27.5"	34.5"	38"



DESIGN:	DATE:
DRAWN:	
REVISIONS	

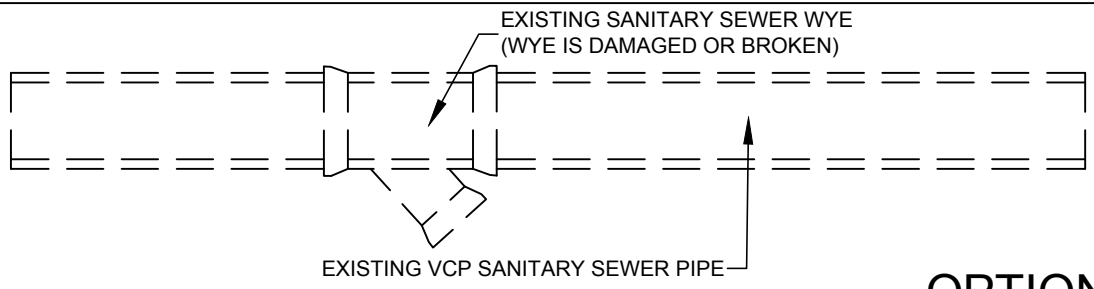
ROSEVILLE ENGINEERING DEPARTMENT
**MANHOLE: TYPE B THRU G
 WITH SUMP**

PLATE
 NUMBER
S-4



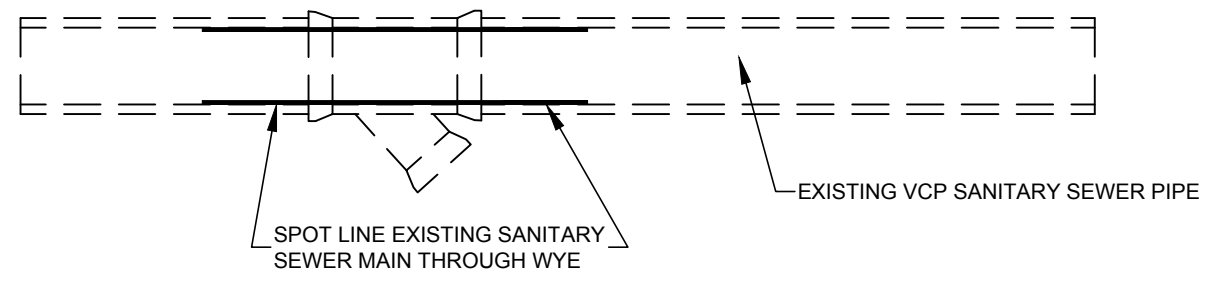
TYPE "A" SERVICES TO BE USED IN CONJUNCTION WITH PLASTIC PIPE SEWER MAIN FOR ALL DEPTHS OF COVER, AND CLAY SEWER MAINS WITH LESS THAN 12 FEET OF COVER. ALL SERVICE PIPE TO BE INSTALLED AND BEDDED IN ACCORDANCE WITH THE APPROPRIATE PIPE BEDDING DETAIL AS INDICATED ON THE PLANS/SPECIFICATIONS.

DESIGN:	DATE:	 ENGINEERING DEPARTMENT SANITARY SEWER SERVICE WITH RISER	PLATE NUMBER
DRAWN: DRT			S-5
REVISIONS: 10/15			

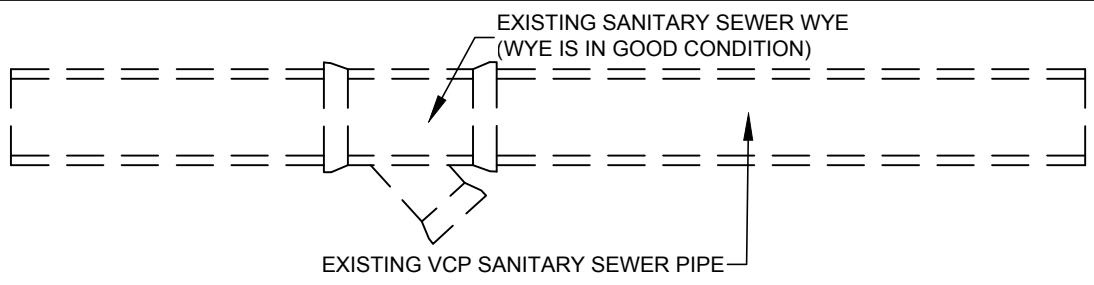


EXISTING VCP SANITARY SEWER PIPE
EXISTING CONDITION

OPTION A

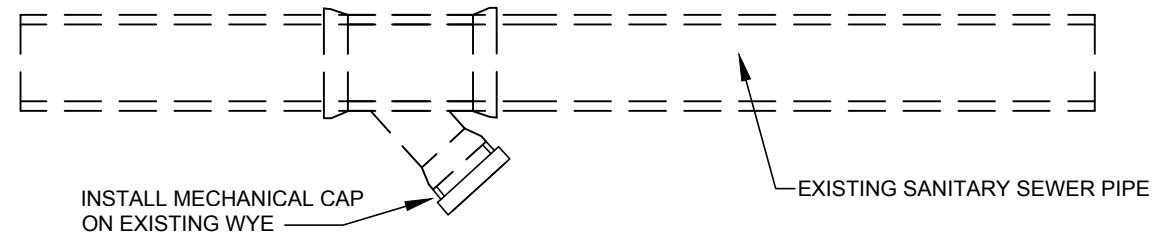


SPOT LINE EXISTING SANITARY SEWER MAIN THROUGH WYE
PROPOSED CONDITION



EXISTING VCP SANITARY SEWER PIPE
EXISTING CONDITION

OPTION B



INSTALL MECHANICAL CAP ON EXISTING WYE
PROPOSED CONDITION

DESIGN:	DATE:
DRAWN: DRT	
REVISIONS: 03/18	


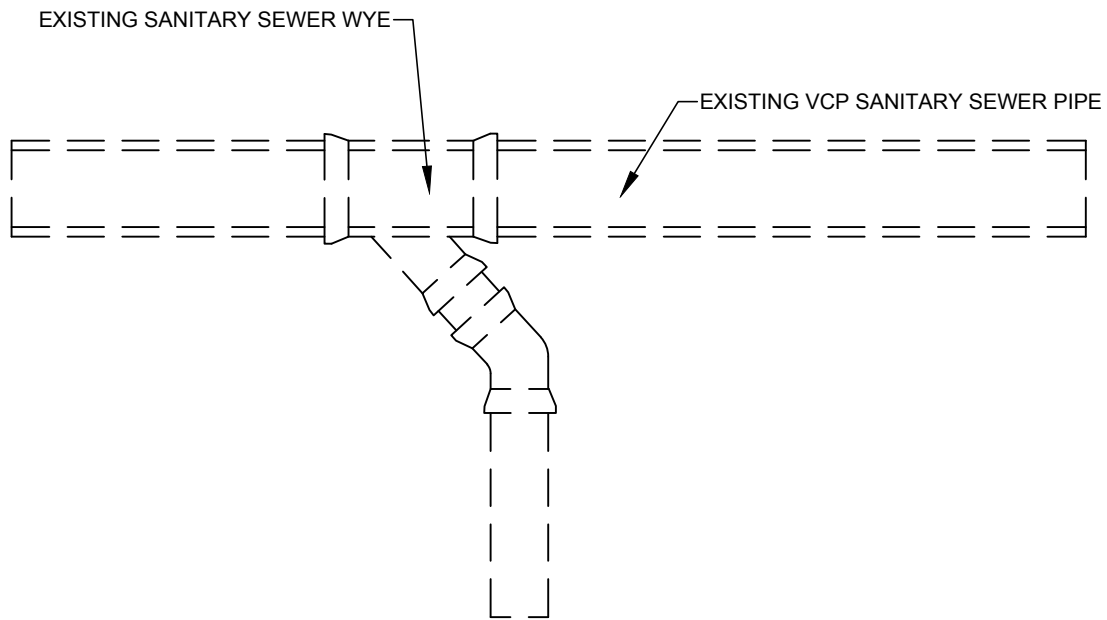
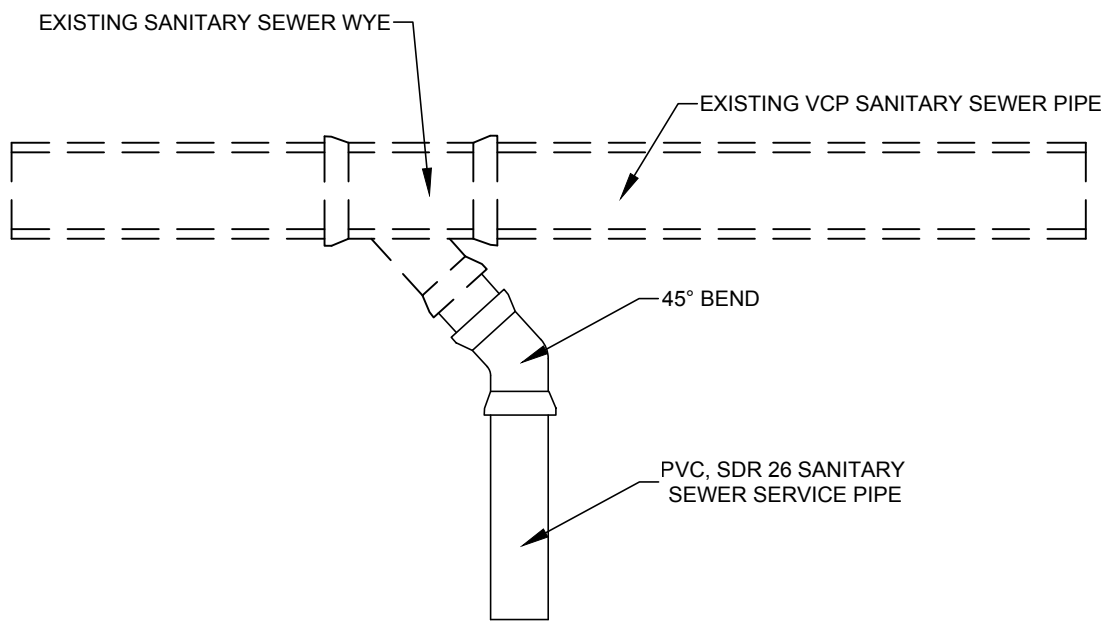

ENGINEERING DEPARTMENT
SANITARY SEWER WYE REPLACEMENT

PLATE NUMBER
S-6



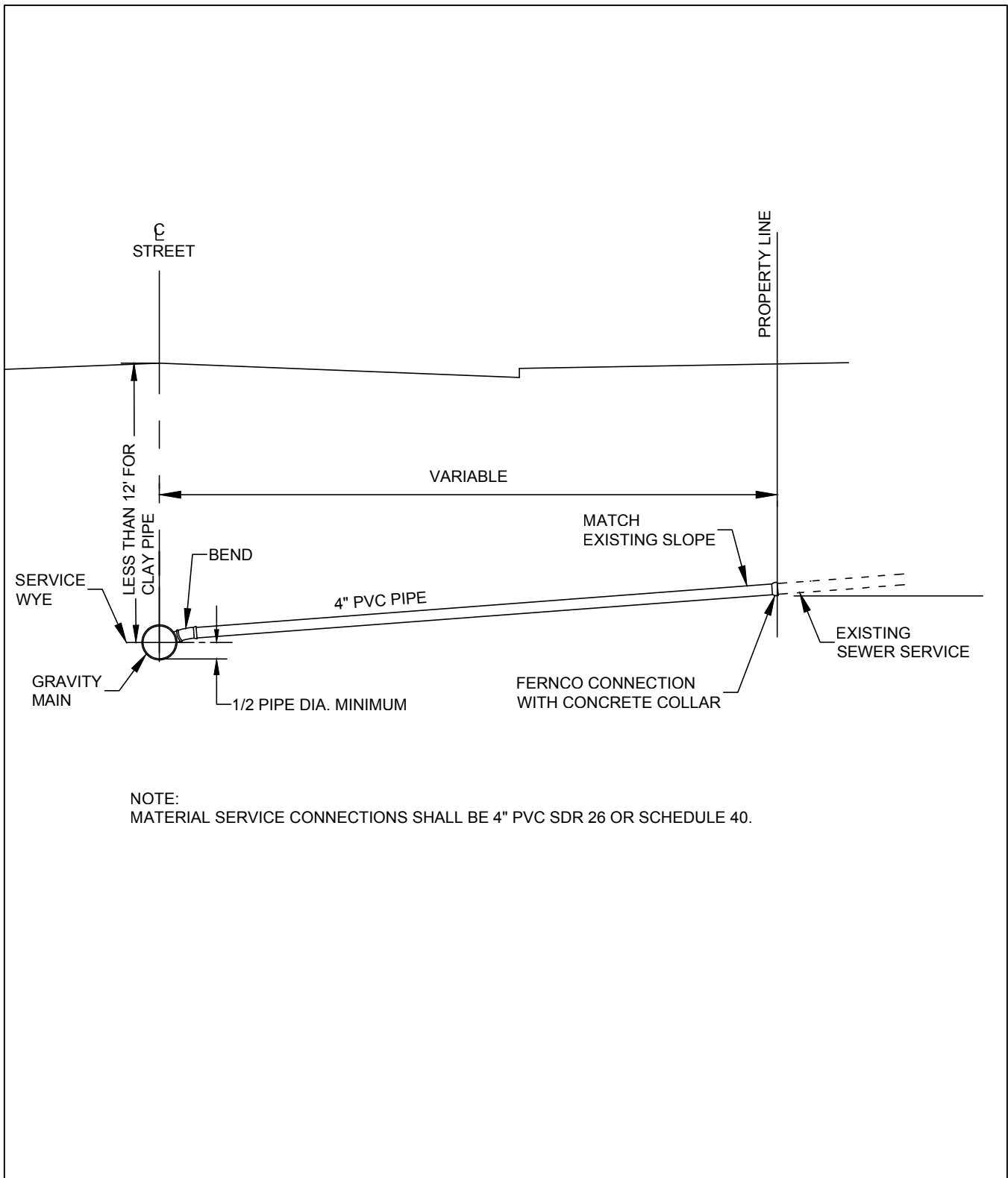
EXISTING CONDITION



PROPOSED CONDITION

NOTE:
 ALL PVC PIPE TO BE INSTALLED AND BEDDED IN ACCORDANCE WITH THE APPROPRIATE PIPE BEDDING DETAIL AS INDICATED ON THE PLANS/SPECIFICATIONS.

DESIGN:	DATE:	 ROSEVILLE ENGINEERING DEPARTMENT SANITARY SEWER SERVICE REPLACEMENT	PLATE NUMBER
DRAWN: DRT			S-7
REVISIONS: 10/15			



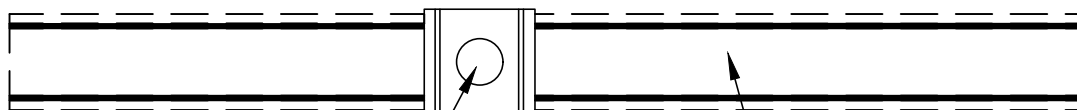
DESIGN:	DATE:	 ENGINEERING DEPARTMENT SANITARY SEWER SERVICE PIPE REPLACEMENT	PLATE NUMBER
DRAWN: DRT			S-8
REVISIONS: 10/15			



EXISTING CIPP LINER

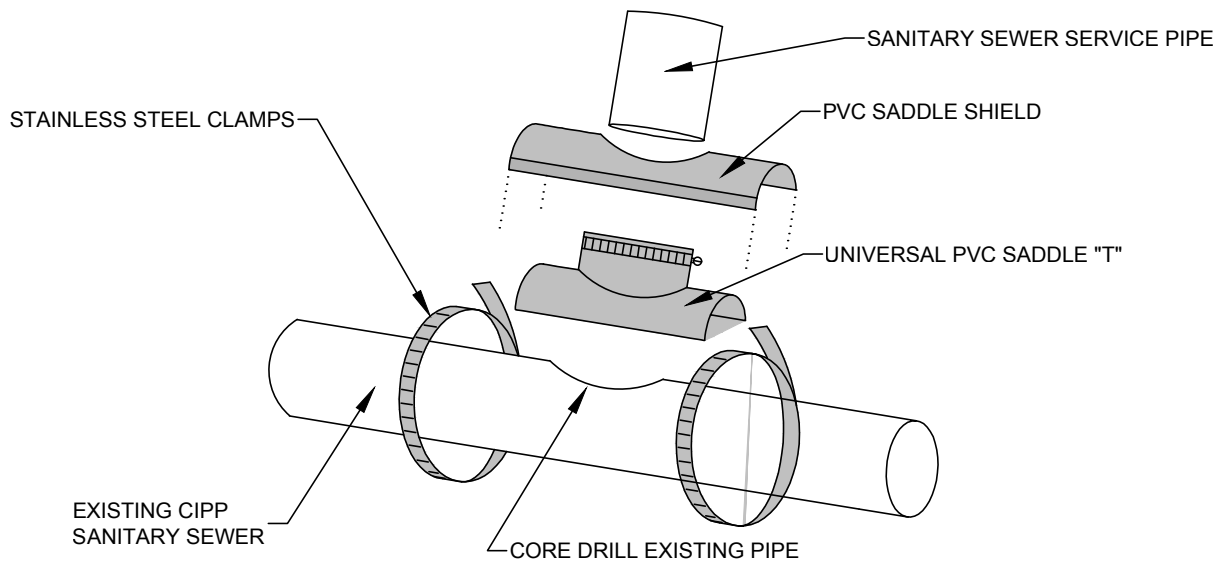
EXISTING SANITARY SEWER PIPE

EXISTING CONDITION



SANITARY SEWER SERVICE WYE BRANCH

EXISTING SANITARY SEWER PIPE



SANITARY SEWER SERVICE PIPE

PVC SADDLE SHIELD

UNIVERSAL PVC SADDLE "T"

STAINLESS STEEL CLAMPS

EXISTING CIPP
SANITARY SEWER

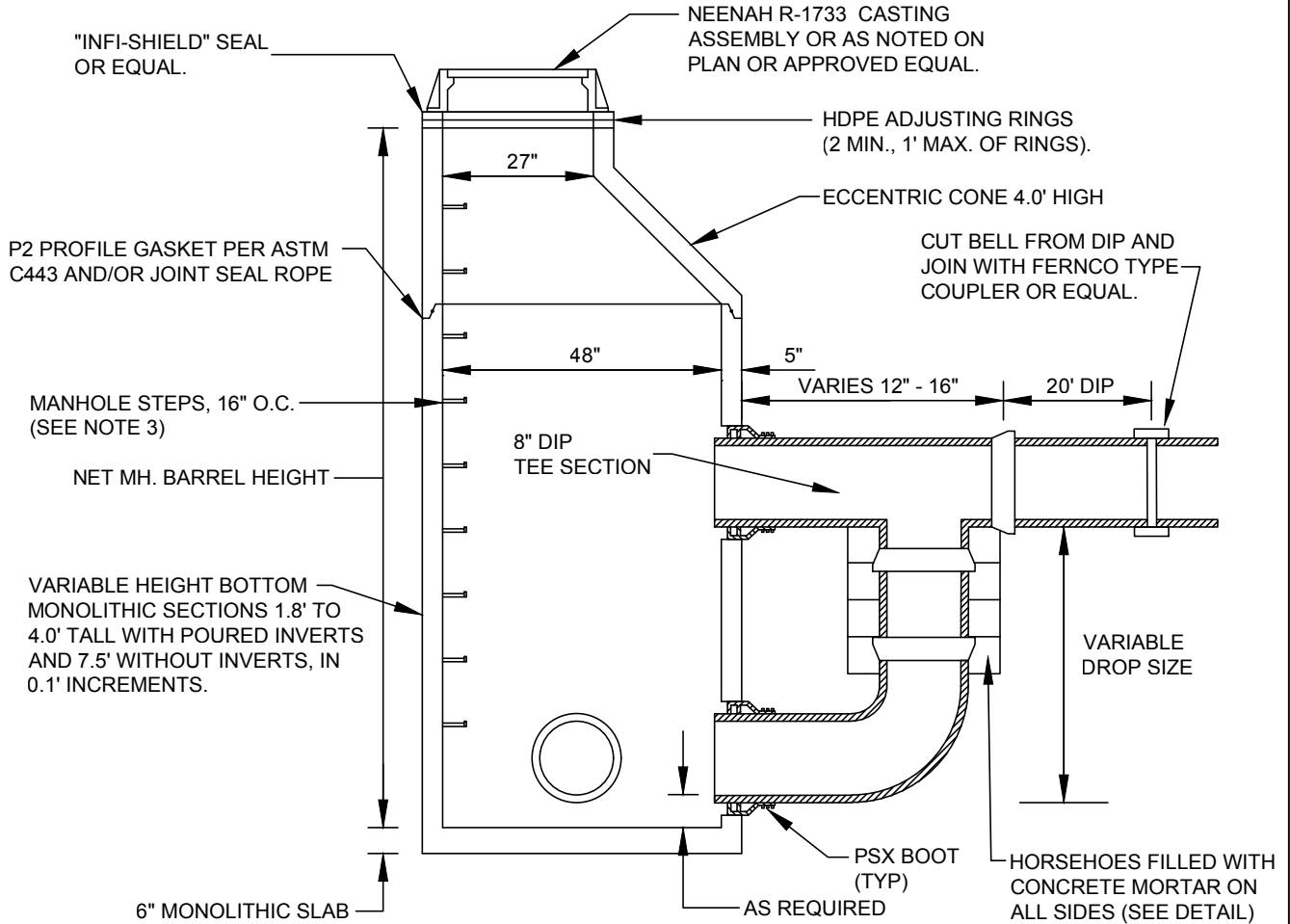
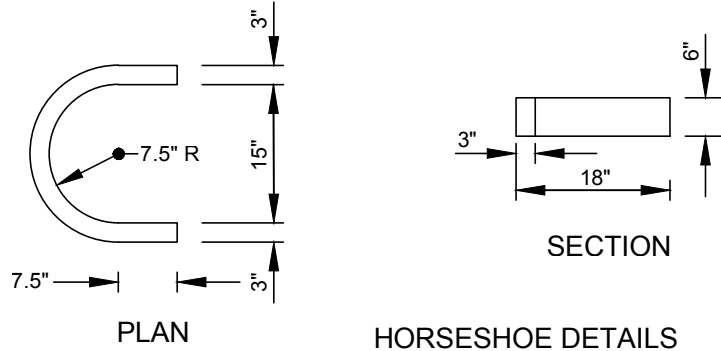
CORE DRILL EXISTING PIPE

PROPOSED CONDITION

NOTE:

1. FOR 4" OR 6" SERVICES, INSTALL PIPECONX SADDLE TEE OR APPROVED EQUAL.
2. FLEXIBLE SADDLE MUST BE INSTALLED IN COMBINATION WITH SADDLE SHIELD.
3. FOR EXISTING SERVICES, REMOVE SERVICE BRANCH PRIOR TO INSTALLING PVC SADDLE.

DESIGN:	DATE:	 ENGINEERING DEPARTMENT SANITARY SEWER SERVICE INSTALLATION FOR CIPP	PLATE NUMBER
DRAWN: DRT			S-9
REVISIONS: 10/11/18			



NOTES:

1. NO WOOD SHALL BE USED FOR ADJUSTING CASTING.
2. CAST IRON FRAME AND COVER AS PER SPECIFICATIONS.
3. MANHOLE STEPS SHALL BE ALUMINUM, OR STEEL REINFORCED PLASTIC PER ASTM C478.
4. PRECAST REINFORCED CONCRETE MANHOLE SECTIONS PER ASTM C478 FURNISHED WITH O-RING GASKETS AND LUBRICANT EXCEPT AS OTHERWISE SPECIFIED. LIFT HOLES NOT PERMITTED IN MANHOLE SECTIONS.
5. PIPE CONNECTIONS TO MANHOLE SHALL BE MADE WATER TIGHT BY CAST IN PLACE RUBBER BOOT AND CEMENT MORTAR. INSIDE SURFACE SHALL BE FINISHED SMOOTH.

DESIGN:	DATE:		
DRAWN:			
REVISIONS			

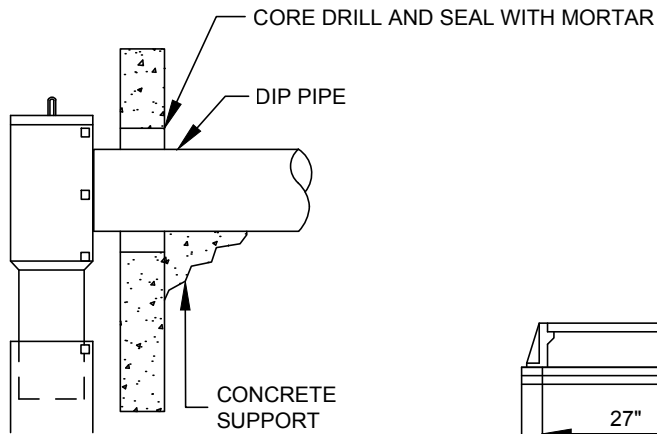


ENGINEERING DEPARTMENT

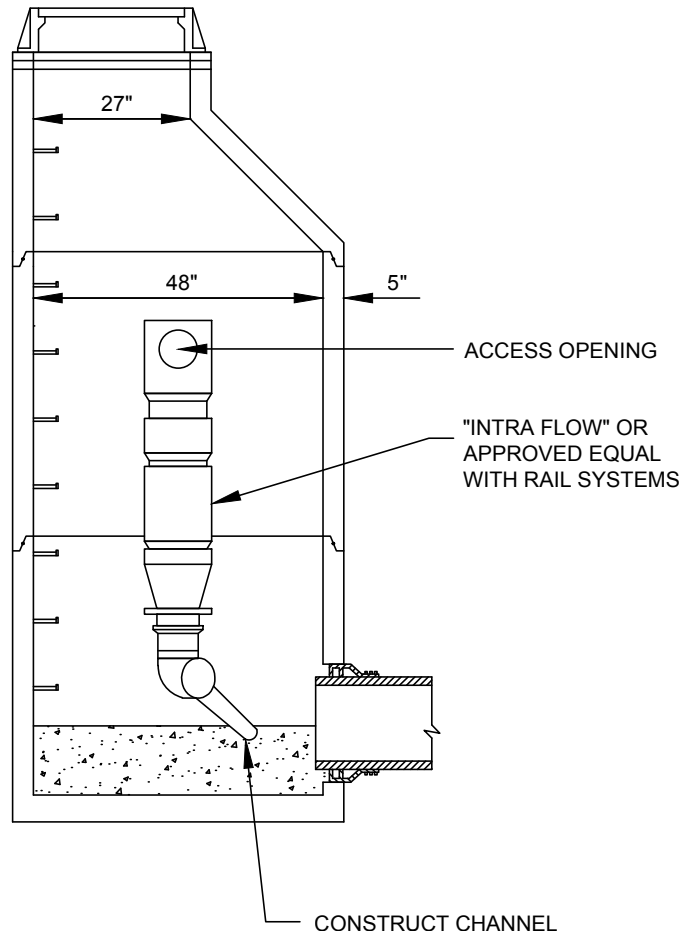
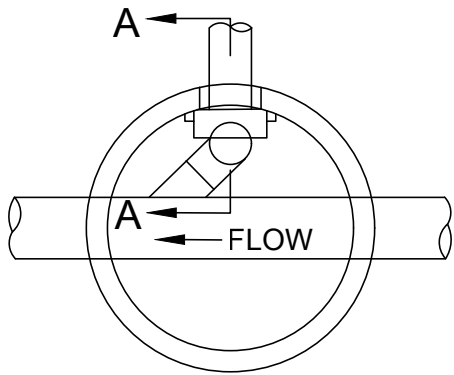
**SANITARY DROP
INLET MANHOLE**

PLATE
NUMBER

S-10



SECTION A - A



DESIGN:	DATE: 2-22-17
DRAWN:	
REVISIONS	

ROSEVILLE ENGINEERING DEPARTMENT
**INSIDE DROP MANHOLE
 ADDITION**

PLATE
 NUMBER
S-11