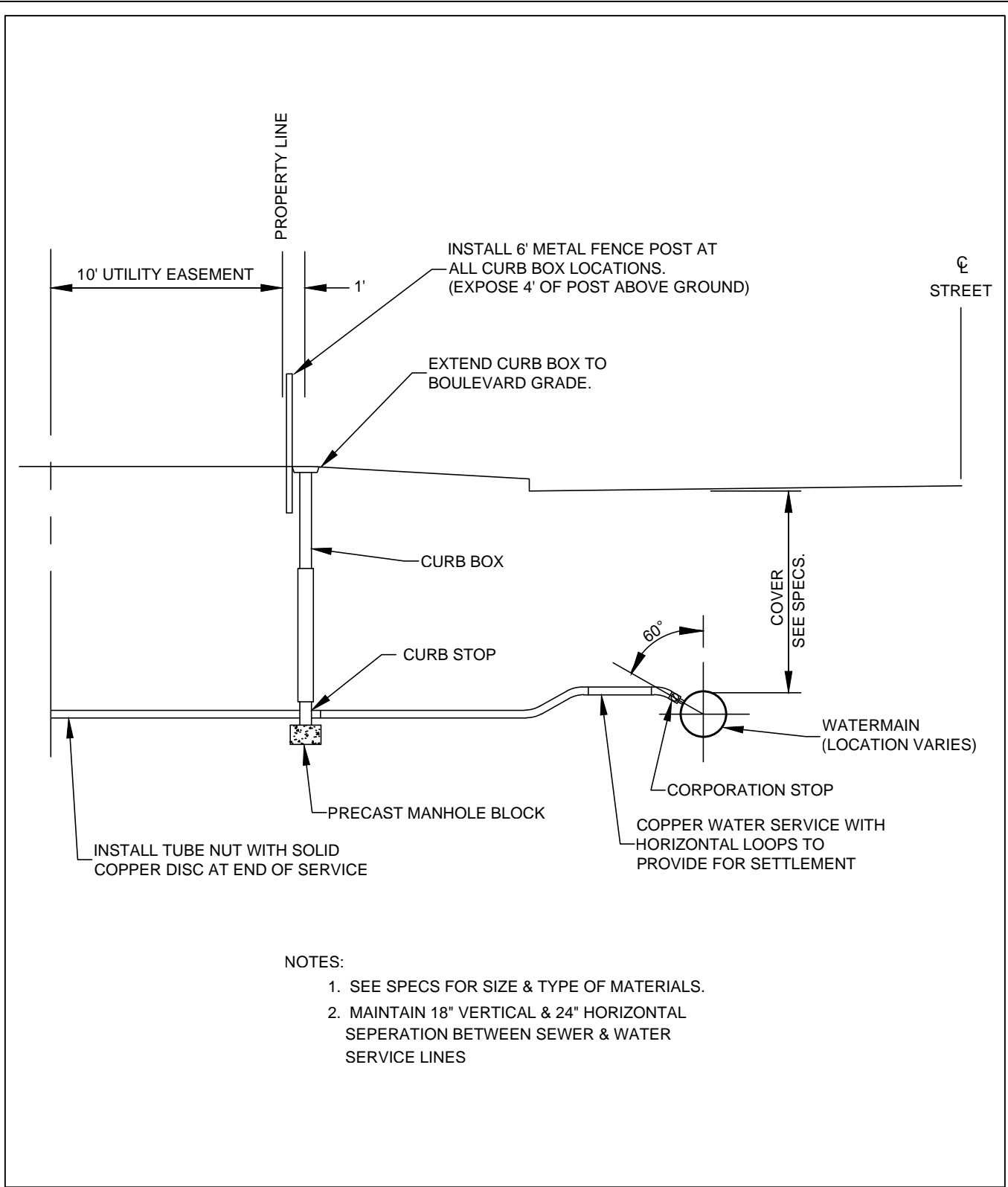


DESIGN:	DATE:
DRAWN:	
REVISIONS	

ROSEVILLE ENGINEERING DEPARTMENT
**HYDRANT AND GATE VALVE
 INSTALLATION**

PLATE NUMBER
W-1



- NOTES:
1. SEE SPECS FOR SIZE & TYPE OF MATERIALS.
 2. MAINTAIN 18" VERTICAL & 24" HORIZONTAL SEPERATION BETWEEN SEWER & WATER SERVICE LINES

DESIGN:	DATE:			
DRAWN:				
REVISIONS				


ENGINEERING DEPARTMENT
WATER MAIN SERVICE CONNECTION

PLATE NUMBER
W-2

Ford Abandoned Corp Cap

Style FACC

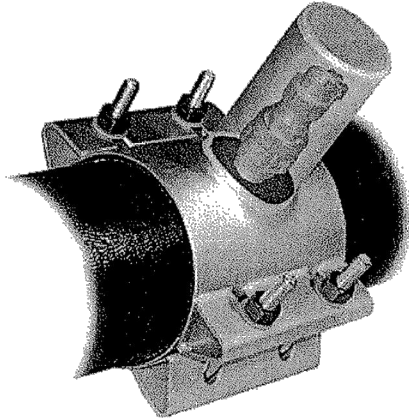
Accommodates nominal pipe sizes 4" through 24"

The Ford Abandoned Corporation Cap provides a quick and easy way to encapsulate corporation stops that are no longer used to provide water service.

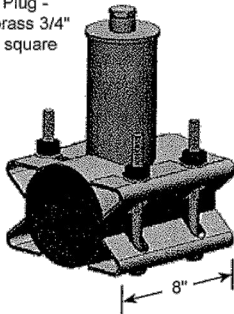
3" cap to encapsulate 1/2" through 1" corporation stops
 5" cap to encapsulate 1-1/4" through 2" corporation stops

Specifications:

Body: 18-8 type 304 stainless steel construction
Gasket: Gridded SBR full pad gasket
Outlet Gasket: Buna-N outlet gasket
Bolts and Nuts: 18-8 type 304 stainless steel hardware



Optional Test Plug -
 Waterworks brass 3/4"
 with standard square
 head



CAP SIZE	CORP RANGE
3"	1/2" - 1"
*5"	1-1/4" - 2"

NOMINAL PIPE SIZE	SLEEVE O.D. RANGE	CATALOG NUMBER WITH 3" OUTLET
4"	4.50-4.80	FACC-480
	4.80-5.00	FACC-500
	5.10-5.30	FACC-530
	5.20-5.40	FACC-540
*6"	6.63-7.00	FACC-700
	6.90-7.30	FACC-730
	7.30-7.50	FACC-750
*8"	8.63-9.05	FACC-905
	9.05-9.30	FACC-930
	9.30-9.60	FACC-960
	9.45-9.75	FACC-975
*10"	10.75-11.10	FACC-1110
	11.10-11.40	FACC-1140
	11.40-11.70	FACC-1170
*12"	11.85-12.15	FACC-1215
	12.75-13.20	FACC-1320
	13.20-13.50	FACC-1350
	13.50-13.80	FACC-1380
	14.10-14.40	FACC-1440
*14"	15.30-15.70	FACC-1570
	15.80-16.20	FACC-1620
	16.48-16.88	FACC-1688
*16"	17.40-17.80	FACC-1780
	17.75-18.15	FACC-1815
	18.15-18.60	FACC-1860
*18"	18.80-19.20	FACC-1920
	19.50-19.92	FACC-1992
	19.80-20.20	FACC-2020
*20"	20.20-20.60	FACC-2060
	21.20-21.60	FACC-2160
*24"	23.80-24.20	FACC-2420
	25.60-26.00	FACC-2600
	26.20-26.60	FACC-2660

Options Include:

Add "-TP" to end of catalog number for Test Plug option.
 Example: FACC-930-TP

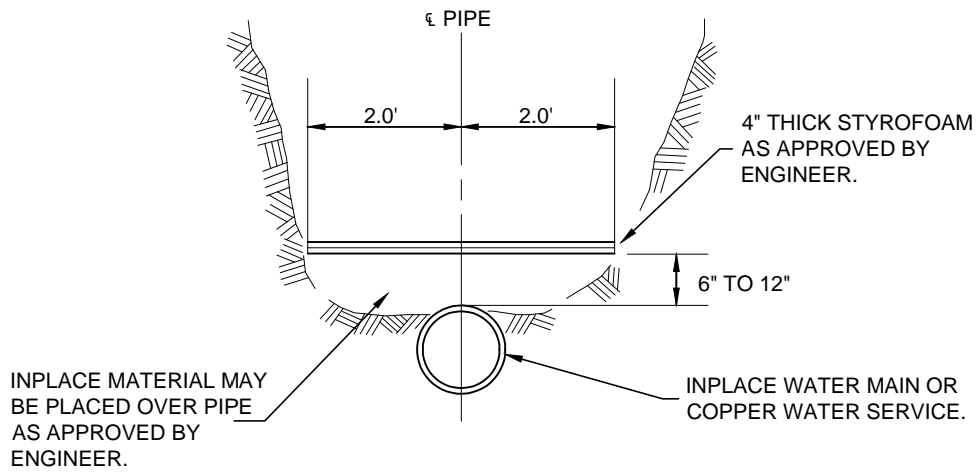
*Optional: 5" cap to encapsulate 1-1/4" through 2" corporation Stops, add "-XL" following the sleeve O.D.
 Example: FACC-930-XL

NOTES:

1. SEE SPECS FOR SIZE & TYPE OF MATERIALS.

L-20

DESIGN:	DATE: 8/22/13	 ENGINEERING DEPARTMENT WATER MAIN SERVICE DISCONNECTION	PLATE NUMBER
DRAWN:			W-3
REVISIONS			



DESIGN:	DATE:		PLATE NUMBER
DRAWN:			
REVISIONS		PIPE INSULATION DETAIL	W-4